

PRAGUE 2023 – TOGETHER ON THE ROAD AGAIN

XXVIITH WORLD ROAD CONGRESS 2023

PRAGUE CONGRESS CENTRE
PRAGUE, CZECH REPUBLIC



A Word from the President of PIARC

It is my pleasure to invite you to the PIARC XXVIIth World Road Congress that will take place in Prague, Czech Republic. The Congress will take place at the Convention Centre from 2–6 October 2023.

The theme of the Congress is “Prague 2023 – Together on the road again”. An apt theme given that the pandemic has kept us apart for far too long.

Development and economic growth are requirements for countries to prosper. However, the pandemic and the challenges posed by having to consider resilience in the supply and maintenance of road infrastructure taught us to move past the pragmatism of this approach. Our approach should encompass social goals, work toward reducing poverty, and promote innovation that leads to the improvement of the quality of life. Road infrastructure, as a community asset, has shown itself through the years to be a powerful tool in improving the quality of life and promoting social cohesion. However, ensuring sustainability thereof requires integrated, participating, and inclusive processes to achieve the desired results.

It is imperative that developed and developing countries alike join hands and take responsibility for our shared goals of sustainable development and push back the frontiers of poverty. Road infrastructure has always played a pivotal role in enabling socio-economic development of societies.

PIARC since its inception has taken the lead in gathering the world road community at its Congresses to share knowledge, experiences, and cement bonds between its diverse group of members. Although the Strategic Plan directs and guides the activities of PIARC during a given cycle, its main objective of international cooperation and technology transfer has always been retained.



During this cycle, the Strategic Plan has, inter alia, comprises four themes, namely:

- Road Administration;
- Mobility;
- Resilient Infrastructure; and
- Safety and Sustainability.

The Congress programme features the presentation of the results of the work undertaken by PIARC's 24 Committees and Task Forces, as well as several specialized sessions and workshops dealing with topics of current and future interest and a large exhibition in which road administrations, equipment and service providers, consultants and road-related organizations will be present. Ministers will be present to share their views on the status and future of roads and road transport.

We also invite experts from around the world, researchers as well as practitioners, to submit articles in answer to our International Call for Papers and to present their views

on the technical, social, and economic best practices related to the road sector.

This World Road Congress will see a return to an in-person event, and it will thus offer all road professionals a unique opportunity to discuss information on current trends and challenges for roads and road transportation all over the world.

On behalf of PIARC, I express my sincere gratitude to the Government of the Czech Republic for their commitment to host and organize the Congress and their efforts to ensure that the event is a great success.

I invite you to mark this event on your agenda and look forward to meeting you in Prague in 2023.

Nazir Alli

PIARC President

A Word from the Chair of the Czech Road Society



Dear Colleagues and Friends,

The World Road Congress in Prague will be a major event of 2023. The Czech Road Society, founded in 1934, has made extraordinary efforts to host this event, which brings with it recognition of the long-standing work of Czech experts and their experience in the field of transport infrastructure. We have had significant support in this from the Ministry of Foreign Affairs, the City of Prague and former Prime Minister Andrej Babiš.

The Congress, which will be attended by 3,000 to 5,000 delegates, mostly from abroad, will present the latest trends and technologies in the road transport sector. While the Prague Congress is running, the Ministers of Transport from the almost 130 member countries of the association will meet to share their insights and discuss the challenges posed by the modernisation of their national road infrastructure.

The Czech Road Society believes that this prestigious project will not only afford a chance to meet the world's best experts here in Prague, but will also provide impetus for a restart, a renaissance of the road sector in the Czech Republic. I hope that this event, with its associated activities, will restore the industry to a prominent position in the eyes of the general public, and attract young people, schoolchildren and students, back into the field. Infrastructure is absolutely critical for a country's social and economic development, and the Czech Road Society intends to be actively involved in that development. Our representatives, therefore, want to rekindle interest in this area not only in Czech and Slovak technical universities, but also to start one step earlier, in secondary and vocational schools.

I look forward to meeting you in Prague!

Petr Mondschein

A Word from the Minister



Dear Representatives of the road and transport sector,

It is a great honour for me to build on the work of my predecessors and to invite you to the World Road Congress to be held in Prague in 2023. As a ministry we believe that infrastructure is absolutely crucial for social and economic development, and we feel it is our duty to play an active role in its advancement, both locally and globally.

We are confident that the WRC in Prague will be a platform for the creation of new projects, the initiation of constructive discussions and the implementation of new, innovative approaches to road mobility.

The Czech Republic is proud to host this event and to participate through expert presentations, and we look forward to your visit to Prague, which has inspired scientists, industrialists and artists for centuries.

I would like to assure you personally, and also on behalf of Czech industry, the Czech academic world and our public representatives, that we will do our utmost to make the Congress a successful and beneficial event for all those involved.

I look forward to seeing you here in Prague!

Martin Kupka

See you in Prague

À Bientôt à Prague

Na viděnou v Praze!

NOS vemos en Praga

PIARC, The World Road Association



PIARC, the World Road Association, was founded in 1909 in Paris as a non-political, non-profit association, with the goal of organising the exchange of knowledge in all areas related to roads and road transport. Membership of PIARC is open to representatives of the governments of member countries, their national and regional administrations, organisations and institutions (as collective members – as in the case of the Czech Road Society) but also to private individuals.

Czechoslovakia became a member of the association in 1921

The association is headed by its President (elected for a 4-year term – Mr. Nazir Alli is in office since 2022), and its organisational activities are managed by its Executive Committee. Its Secretary General is Mr. Patrick Malléjacq. The association is based in Paris.

The Czech Delegation



Luděk Sosna, Ph.D.
First Delegate



Václav Neuvirt, CSc.
President of the Czech National Committee PIARC & member of the Executive Committee

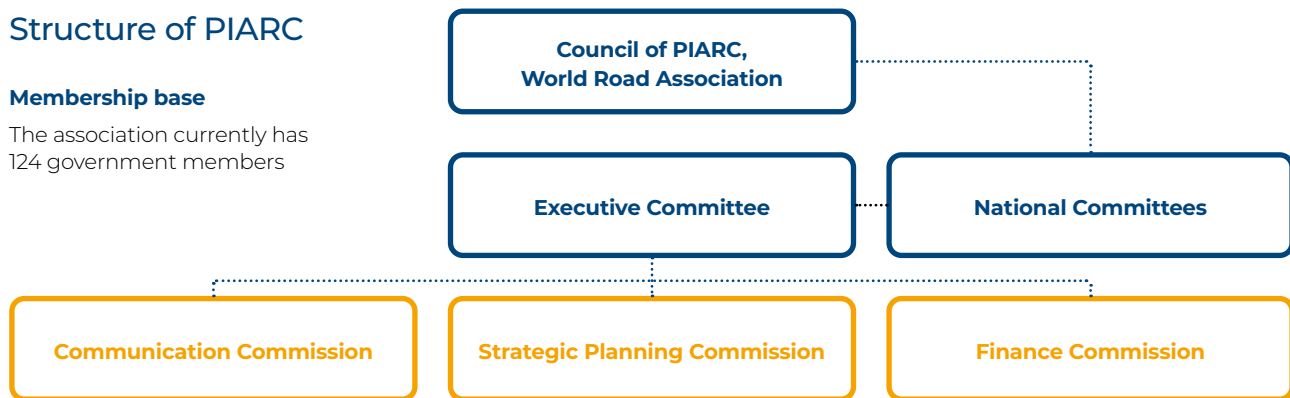


Petr Mondschein, Ph.D.
President of the Czech Road Society

Structure of PIARC

Membership base

The association currently has 124 government members



Mission

“PIARC’s main mission is to promote international cooperation and to foster progress in the field of roads and road transport.”

PIARC

Assists

with the establishment of National Committees in member countries. National Committees contribute to the dissemination of PIARC deliverables, organise activities such as expert meetings, conferences and seminars. The Czech National Committee has existed since 1993, as one of the two successors of the former Czechoslovak National Committee founded and approved in 1938, which was one of the oldest PIARC National Committees.

Organises

- in collaboration with governments
- the World Road Congress every four years,
 - the World Winter Service and Road Resilience Congress every four years.

Prepares

Strategic Plans covering the period between World Road Congresses, including proposals for individual strategic themes. To address these, it establishes Technical Committees and Task Forces. The results, including the implementation of Strategic Plans, are presented at the end of each four-year period at the World Road Congress.



LOGO OF THE XIVTH WORLD ROAD CONGRESS

In 2023, the World Road Congress will be held in Prague for the second time

In 1971, the XIVth World Road Congress was held in Prague and president Ludvík Svoboda attended the event (the photo below commemorates this important date).

It is a great honour for the Czech Republic to be the host of the World Road Congress, as we will become one of only four countries where the WRC has been held twice: (France – Paris, Belgium – Brussels, Mexico – Mexico City, Czech Republic – Prague).



Congress Rationale – “Let’s find our common priorities and work together!”

- The Czech Ministry of Education, Youth and Sports and the Slovak Ministry of Education, Science, Research and Sport are actively supporting the efforts to create a platform for collaboration between academia and industry. Representatives of both ministries have pledged their personal participation in the 2023 Congress.
- Six leading universities were invited to the Prague congress as exhibitors, and asked to nominate their best students to actively take part and present their projects and goals.
- **We realise that promotion of the road industry must start with secondary schools, so we are preparing a plan to reach out to them, along with a project that we will present to the regional authorities in charge of schools and the Education Ministry, which we would like to engage with in the coordination and strategic planning of this activity.**
- The latest technology trends and strategic plans will be presented by local and international experts from academia and the private sector.
- Our aim is to get more countries interested in the idea of linking academia and industry.
- We believe that launching vigorous discussion and collaboration between these two spheres is a key prerequisite for the further development of the road sector both in our country and worldwide.

“The education field can’t develop and further specialise without the industry, and modern industry needs skilled and well-educated experts coming from the universities – Let’s all meet in Prague!”

The Czech Road Society – Expert project promoter and organiser



The Czech Road Society is a voluntary, independent, professional organisation of engineers, technicians, students, workers and other road industry experts and professionals encompassing the entire territory of Bohemia, Moravia and Silesia. The society’s activities are centred on the work of its branches and specialised divisions.

Member of the Czech Association of Scientific and Technical Societies, the Czech Road Contractors Association, the Slovak Road Society, the Polish Road Congress and the Hungarian Public Roads.

Specialised divisions

Road Management and Maintenance, Road and Urban Transport Engineering, Cement Concrete Roads, Asphalt Roads, Road Surface Characteristics, Road Tunnels, Earthworks, Road Safety, Road Bridges.

Founded in

1934

as the “Road Society”.



Activities

Professional events, publications, drafting and reviewing of standards, laws and regulations, education, international collaboration, popularisation of the industry.

Regular events and activities

“Geotechnical Days”, Road management and maintenance, “Transport Engineering Days”, Roads, “Roadman Rodeo”, Asphalt roads, **Road Industry Conferences**, Doctoral thesis competitions.

Magazine

Silniční obzor (Road Horizon) published since 1922.



Registration

| | Early Bird Fee (online) | Standard Fee (online) | Onsite Fee |
|--|----------------------------|--------------------------|------------|
| PIARC members | 900 EUR | 1,000 EUR | 1,200 EUR |
| Non-members | 1,000 EUR | 1,150 EUR | 1,400 EUR |
| Discounted registration fee (low and lower-middle income countries) | 500 EUR | 600 EUR | 700 EUR |
| Single day | 400 EUR | 475 EUR | 550 EUR |
| Accompanying persons | 300 EUR | 400 EUR | 500 EUR |

Registration Fee Includes (delegate and discounted registration fee):

- admission to the opening and awards ceremony
- welcome reception
- interdisciplinary lectures
- all scientific and technical sessions
- meals
- entrance to the exhibition
- technical visit
- gala dinner

**The early fee period covers the period
from October 2022 till 31 March 2023**

See you in Prague



Venue Benefits

- Flexible options for events of all sizes.
- Located on the main metro line at Vyšehrad station, just 5 minutes from the Muzeum central metro station.
- The Prague International Airport is located approximately 15 km from the PCC.
- Two large hotels just next to the PCC (Corinthia Hotel Prague & Holiday Inn).
- Plenary hall with a maximum capacity of 2,764 participants.
- Exhibition area of 13,000 m².
- Total number of available rooms: 24 lecture halls and 50 meeting rooms and offices.
- State-of-the-art A/V and technical equipment.
- In-house catering company known as the best in the Czech Republic.
- Spacious foyers to hold large exhibitions with unique panoramic views of Prague, including the Prague Castle, Vyšehrad and the Old Town.

Prague Congress Centre (PCC)

The Prague Congress Centre is one of the most dominant landmarks of the capital, with wonderful panoramic views of Prague. It can hold events for up to 9,300 participants in more than 50 halls, meeting rooms and conference rooms of various sizes. Its refurbishment was completed in January 2018 and it is equipped with cutting-edge technology. The congress centre has a long tradition of hosting a wide range of international events and meetings of all sizes.

Thanks to its original purpose, the Prague Congress Centre opens a window on the history of 20th century Eastern Europe. From its opening in 1981, the building, originally named Palace of Culture, was used for communist conventions, and it saw the last congress of the communist party in 1989. The witness of a past that contributed to shape post-communist European countries, this venue now offers modern top-quality conference services.

With its central location, the Prague Congress Centre is easily accessible from all hotels within the city. Furthermore, the congress centre enjoys a strategic advantage with over 800 hotel rooms available within less than 5 minutes walking distance.

A One-Stop Solution in Prague

With all key requirements in one renovated building and just 5 minutes away from the city centre using the complimentary public transport tickets that will be provided, the Prague Congress Centre is a fantastically convenient solution for all WRC delegates.





Accommodation

Prague offers world-class accommodation at a reasonable cost. Its hotels and other amenities, mostly built in the last decade, can accommodate more than 100,000 people and offer the highest standard of service. You can find any category of lodging in Prague – boutique hotels, luxury hotels in former palaces, international hotel chains, Bed and breakfast and halls of residence for students. The Prague Congress Centre is reachable within 25 minutes from any hotel close to any metro station.

| HOTEL | TYPE | CAPACITY | DISTANCE | FROM PRICE, SINGLE ROOM |
|---------------------|------|----------|--------------------------------|-------------------------|
| CORINTHIA | 5* | 550 | Walking distance | 190 € |
| HOLIDAY INN | 4* | 250 | Walking distance | 160 € |
| RADISSON | 5* | 200 | 2 metro stops | 220 € |
| RIVERSIDE HOTEL | 5* | 200 | 3 metro stops | 200 € |
| HILTON | 5* | 791 | 4 metro stops | 200 € |
| MARRIOTT | 5* | 293 | 3 metro stops | 200 € |
| PANORAMA | 4* | 500 | 2 metro stop | 140 € |
| YASMIN | 4* | 220 | 2 metro stops | 160 € |
| OTAR/OYA | 3* | 80 | 1 metro stop | 90 € |
| BERÁNEK | 3* | 80 | 1 metro stop | 95 € |
| IBIS WENCESLAS SQ. | 3* | 180 | 1 metro stop | 100 € |
| ILF | 3* | 230 | 3 metro stops | 95 € |
| KOLEJE PETRSKÁ HALL | 2* | 100 | 4 metro stops | 40 € |
| MASARYK HALL | 2* | 300 | 6 metros tops | 40 € |
| HLÁVKOVA HALL | 2* | 100 | 10 minutes by public transport | 40 € |
| CHODOV HALL | 2* | 1,000 | 35 minutes by public transport | 35 € |

Congress Dinner

Industrial Palace

The Local Organizing Committee would like to invite all the delegates to the Industrial Palace. We would like to introduce you to our culture and, of course, our cuisine while you are enjoying the company of friends and colleagues in the pleasant atmosphere of this iconic building. But above all, you will get a chance to visit the place that was the venue of the WRC back in 1971.

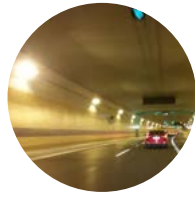
Located in Holešovice, in the Prague 7 borough, the Industrial Palace is a historic gem of Art Nouveau style. With one of the first mounted steel structures in the Czech lands, this glass palace is one of the most important Art Nouveau monument in the city. Designed and built for the General Land Centennial Exhibition (also known as the Prague Jubilee Exhibition) in 1891 by architects Bedřich Müenzberger and František Prášil, it has held numerous events over the years including international trade fairs and expositions.



Technical Visits



1. Belt Highway Around Prague: Prague Ring (SOKP) Běchovice – Motorway D1 – Slivenec + Traffic Dispatching in Rudna



2. Prague City Ring Section Malovanka – Pelc Tyrolka (Blanka Tunnel Complex)



3. Multi-Function Operation Centre Malovanka in Prague



4. Metro Construction in Prague – Line D



8. Motorway D35: Section Opatovice nad Labem – Vysoké Mýto and Motorway D11: Hradec Králové – Jaroměř – Trutnov – Border Czechia/Poland



9. Large Motorway Brno Ring: Section Road I/42



10. Motorway D1: Section Říkovice Lipník nad Bečvou – Ostrava Border Czechia/Poland and National Traffic Information and Control Centre (NTICC) in Ostrava



11. Construction of Technically Demanding Road Infrastructure around Žilina (Slovakia)

Welcome to a Traffic Hub

Prague is a major traffic hub, very well connected by all major and budget airlines. From Prague, you can reach 130 different destinations in 52 countries using 53 different airline companies.

The International Prague Airport is situated about 15 km west from the city centre and is easily accessible by public transport. The approximate travel time (public transport/taxi) is 30–40 minutes. Furthermore, Prague also has two international railway stations and an international bus station, all connected to the Prague city metro system.

Getting around the Prague city centre is easy and inexpensive. Everything can be reached within a few minutes, even on foot.

Getting to Prague

By Plane

- Easily accessible from all major European and international cities.
- Direct flights from 130 destinations all over the world.
- Two International Terminals – Terminal 1 and 2.
- Many major airlines and low-cost carriers.

By Train

Prague has several train stations, but most international trains arrive at the main railway station – Hlavní Nádraží. But there are also some arrivals from abroad at Holešovice station – Nádraží Holešovice. Both these stations are conveniently connected via metro (red line C) to the Vyšehrad metro station, which is just a few steps away from the Prague Congress Centre and the neighbouring hotels.

By Car

Distance to some European cities:

| | |
|-------------------|----------|
| Vienna | 300 km |
| Bratislava | 328 km |
| Berlin | 350 km |
| Frankfurt am Main | 508 km |
| Budapest | 525 km |
| Kraków | 540 km |
| Zürich | 694 km |
| Amsterdam | 877 km |
| Paris | 1,035 km |

In support of the capital hosting the WRC, the City of Prague will provide all delegates attending the WRC with complimentary transport tickets for the duration of the congress covering metro, bus and tram services.

